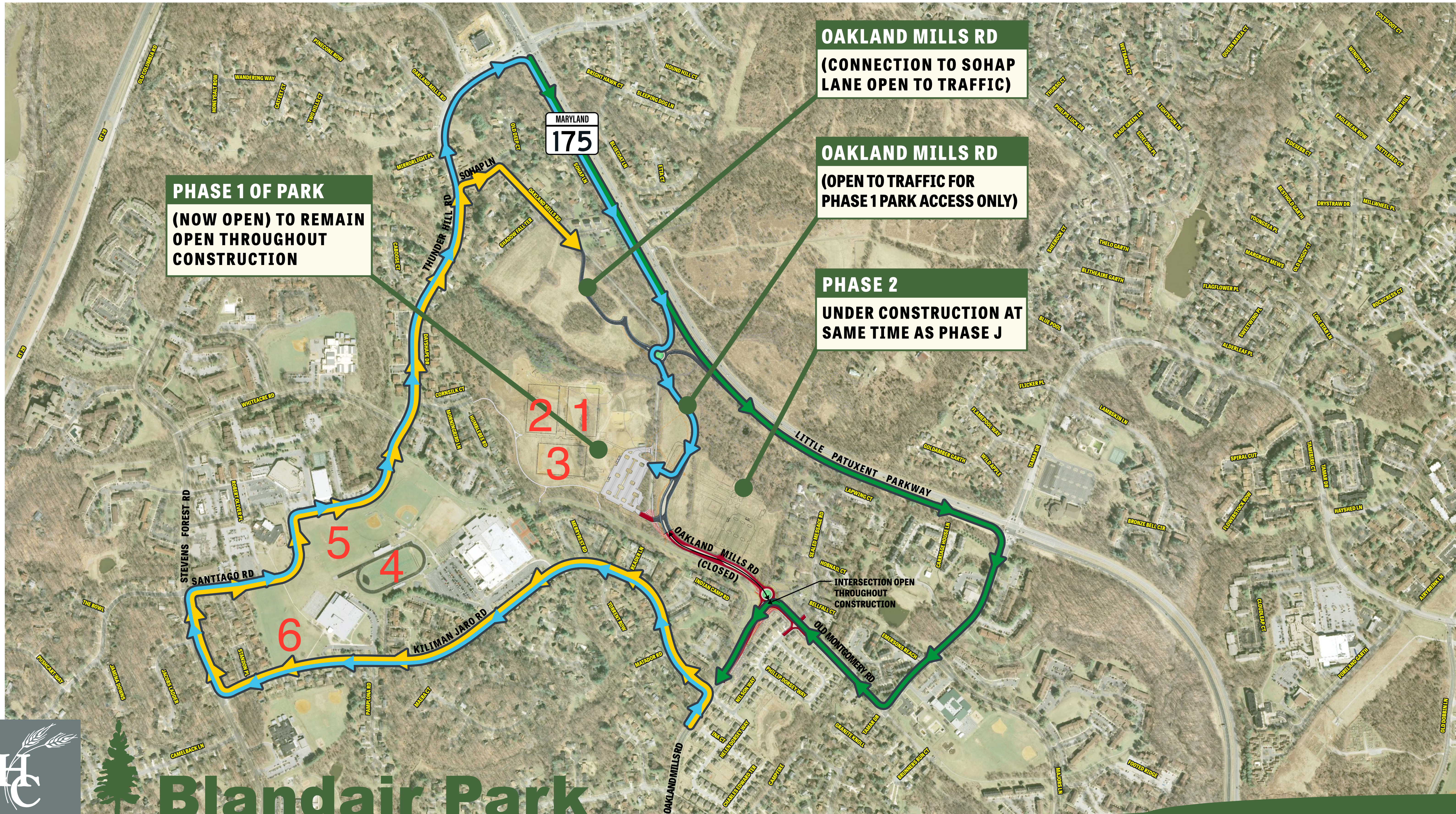


PHASE J - STAGE 2A DETOUR

■ APPROXIMATE DURATION - 6 MONTHS ■



LEGEND:  PROPOSED STAGE OF CONSTRUCTION  NORTHBOUND OAKLAND MILLS ROAD DETOUR  SOUTHBOUND DETOUR OAKLAND MILLS ROAD  NORTHBOUND PARK DETOUR



Blandair Park

COLUMBIA, MARYLAND

